

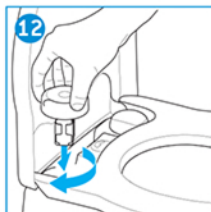
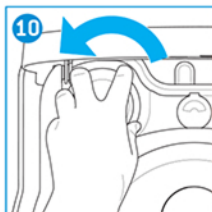
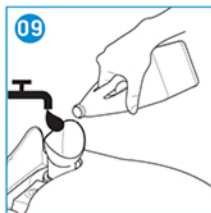
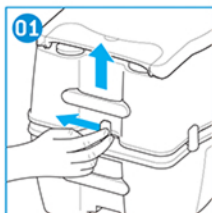
THETFORD



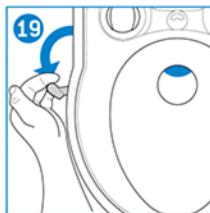
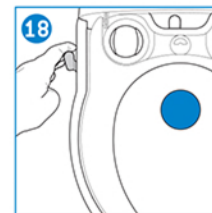
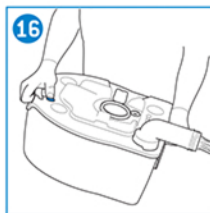
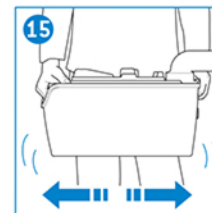
Porta Potti 565 Series

User Manual

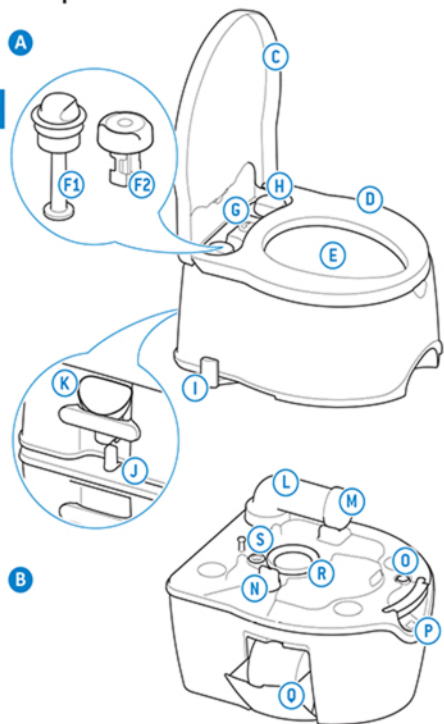
QUICK GUIDE



QUICK GUIDE



Main parts



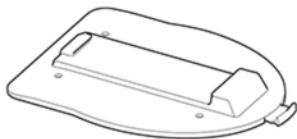
A Flush-water tank

- C Cover
- D Seat
- E Toilet bowl
- F1 Piston pump [565P]
- F2 Electric pump [565E]
- G Level indicator flush-water tank
- H Water fill cap
- I Blade handle
- J Clasp
- K Water fill adaptor

B Waste-holding tank

- L Pour out spout
- M Cap+measuring cup
- N Blade opener
- O Vent button
- P Level indicator waste-holding tank
- Q Toilet roll holder
- R Lip seal
- S Vent seal

Optional extra for your toilet



Floor plate

This allows you to attach the toilet to the floor, wherever you like. One simple action releases the toilet.

1. Introduction

This is the user manual for your Thetford portable toilet. Read the safety instructions and information on use and maintenance of the toilet carefully before continuing. This will enable you to use the toilet safely and efficiently. Retain this manual for future reference.

For the latest version of this manual, please visit www.thetford.com

2. Symbols

Key to symbols:

Warning. Risk of serious injury and/or damage.

Caution. Risk of injury and/or damage.

Attention. Important information.

Note. Information.

3. Before use

See the images in the 'Quick Guide' at the front of the manual for a visual reference [p 2-3].

Your portable toilet is made up of two detachable sections: the flush-water tank (A) and the waste-holding tank (B). Before using the toilet, it is vital that you add toilet additives (where available) to both tanks.

Not using the correct products to care for your Thetford toilet could cause damage.

Thetford offers a wide range of toilet additives and care products. Look on the flyer for the variety of all products.

Prepare the waste-holding tank (B):

- Separate tanks (01).
- Remove the cap from the pour out spout while it is pointing upwards (02).
- Add the correct dosage of waste-holding tank toilet additive (03).
- Add the correct dosage of water to ensure that the bottom of the waste-holding tank is covered (04).
- Replace the cap (05).

Never add toilet additives directly via the blade as this could damage the lip seal of the waste-holding tank. Only fill the waste-holding tank via the pour out spout.

Prepare the flush-water tank (A):

- Recombine tanks (06).
- Remove the water fill cap (07).
- Place the water fill adaptor (08).
- Add the correct dosage of flush-water tank toilet additive (where available) and fill the flush-water tank with clean water (09).
- Replace the cap (05).

If you have a toilet with an electric pump, insert six batteries before use.

4. Use of the toilet

See the indicated Quick Guide images for visual reference.

To vent any built-up heat or altitude pressure and prevent for splashing close the cover and once open and close the blade.

Opening the blade

The toilet can be used with the blade open or closed. To open the blade, pull the blade handle (48/49).

Make sure you always close the blade completely after use.

Flushing the toilet

You can achieve the most effective flush by operating the manual pump with three or four short flushes (20). A toilet with an electric pump will automatically flush with short interruptions (21).



Do not use ordinary toilet paper, as this may cause clogging.

To ensure toilet paper is always on hand, your toilet includes space for one toilet roll.



To prevent water damage to your caravan or motor home, do not travel with a waste-holding tank that is more than 3/4 full. This may cause leakage through the venting system.



To prevent water damage to your caravan or motor home, do not travel with water in the toilet bowl.



To prevent water damage to your caravan or motor home, do not travel with a flush-water tank that is too full. Thetford advises travelling with an empty flush-water tank, but at least not filled more than half-full.



The toilet can withstand a maximum load of 120kg (265 lbs). Make sure you do not overload the toilet.

5. Emptying the tanks

See the indicated Quick Guide images for visual reference.

If you want to continue using your toilet after emptying, prepare the waste-holding tank again.

Waste-holding tank

You need to empty the waste-holding tank when the level indicator turns red.

- Separate the tanks (03).
- Take the waste-holding tank to an authorised waste disposal point.
- Remove the cap from the pour out spout, while it is pointing upwards (02).
- Press and hold the vent button with your thumb while the pour out spout is pointing downwards to empty the waste-holding tank without splashing (13).
- Rinse the tank (44/45/46).
- Recombine the tanks (06).



Do not allow the waste-holding tank to become too full.

Flush-water tank

Only empty the flush-water tank completely if you expect not to use your toilet for a long period.

- Remove the water fill cap (07).
- Empty the flush-water tank through the water fill opening (17).
- Flush the toilet until no more water is being pumped out (20 or 23).



Emptying is only allowed at an authorised waste dump.



To vent the flush-water tank the water fill cap contains a small vent hole. Fresh water can come through when lifting or positioning the toilet under an angle.

6. Maintenance and cleaning

Thetford recommends cleaning your toilet regularly to prevent limescale and ensure optimal hygiene.

- Clean the inside of the bowl with a soft brush and a special cleaning product.
- Clean the complete toilet with special cleaning products.



Never use household cleaners to clean your portable toilet. These may cause permanent damage to the seals and other toilet components.

Also maintain your toilet regularly to prolong the lifespan of your toilet.

- Clean the inside of the waste-holding tank 2 to 3 times a year to remove stubborn limescale.
- Treat the seals with special lubricant to keep the seals soft and pliable.



Never use Vaseline or vegetable oil to lubricate the seals. This may cause leakage to your waste-holding tank.



Thetford offers a wide range of toilet additives and care products. Look on the flyer for the variety of all products.



The valve blade seal is a part of the toilet that is subject to wear. Depending on the extent and manner of servicing, after a certain period the seal will lose quality and must be replaced.

7. Winter use

You can use your toilet as normal in cold weather as long as the toilet is situated in a heated location. If this is not the case, and there is a risk of frost, we advise not to use your toilet. Make sure you completely drain the toilet. Then empty the waste-holding tank and the flush-water tank, see Putting in storage.

8. Putting in storage

- Empty the flush-water tank.
- Flush the toilet until no more water is being pumped out.
- Empty the waste-holding tank.
- Thoroughly clean and dry the whole toilet.
- Open the blade and loosen the cap of the pour out spout to ventilate the waste-holding tank.
- Loosen the water fill cap to ventilate the flush-water tank.

We recommend maintaining your toilet before putting it into storage. See Maintenance and cleaning.



For the 565E model remove batteries.

9. Disposal

Your product has been designed and manufactured with high quality materials and components, which can be recycled and reused. When your product has reached its end of life, dispose of the product according of the local rules. Do not dispose of the product with the normal household waste. The correct disposal of your old product will help prevent potential negative consequences to the environment and human health.

EN

10. Questions

If you have questions about your product, parts, accessories or authorised services:

- Visit www.thetford.com.
- If you cannot solve a problem, contact the authorised local Service Centre or Thetford Customer Service in your country.

For correct and efficient support, please have ready:

- Your name and address.
- Toilet model and serial number from data badge.
- Date of purchase.

Spare parts

Original Thetford spare parts are available through your own dealer or authorised Thetford Service Centre.

11. Warranty

For our warranty clause, please refer to the conditions mentioned on www.thetford.com. For more information, please contact the Thetford Customer Service in your country.

EUROPEAN HEADQUARTERS

Thetford B.V.
Nijverheidsweg 29
P.O. Box 169
4870 AD Etten-Leur
The Netherlands

T +31 76 504 22 00
F +31 76 504 23 00
E info@thetford.eu

UNITED KINGDOM

Thetford Ltd.
Unit 6
Brookfields Way
Manvers, Rotherham
S63 5DL, England
United Kingdom

T +44 844 997 1960
F +44 844 997 1961
E info@thetford.eu

GERMANY

Thetford GmbH
Schallbruch 14
D-42781 Haan
Deutschland

T +49 2129 94250
F +49 2129 942525
E info@thetford.eu

FRANCE

Thetford S.A.R.L.
Parc BUROPLUS / Bâtiment 6
18, Boulevard de la Paix
CS 80008
95895 CERGY PONTOISE
CEDEX
France

T +33 1 30 37 58 23
F +33 1 30 37 97 67
E info@thetford.eu

ITALY

Thetford Italy c/o Tecma s.r.l.
Via Flaminia
Loc. Castel delle Formiche
05030 Otricoli (TR)
Italia

T +39 0744 709071
F +39 0744 719833
E info@thetford.eu

SPAIN AND PORTUGAL

Mercè Grau Solà
Agente para España
y Portugal
c/ Castellet, 36 bxs 2ª
08800 Vilanova i la Geltrú
Barcelona
España

T +34 938 154 389
F not available
E info@thetford.eu

SCANDINAVIA

Thetford B.V.
Representative Office
Scandinavia
Hantverkaregatan 32D
521 61 Stenstorp
Sverige

T +46 31 336 35 80
F +46 31 44 85 70
E info@thetford.eu

AUSTRALIA

Thetford Australia Pty. Ltd.
41 Lara Way
Campbellfield VIC 3061
Australia

T +61 3 9358 0700
F +61 3 9357 7060
E info@thetford.eu
www.thetford.com.au

UNITED STATES OF AMERICA

Thetford Corporation
7101 Jackson Road
Ann Arbor
Michigan 48103
U.S.A.

T +1 734 769 6000
F +1 734 769 2332
E info@thetford.com
www.thetford.com

CHINA

Thetford China
Rm. 1207, Coastal Building (East Block)
Haide 3rd Road, Nanshan District
Shenzhen, 518054
China

T +86 755 8627 1393
F +86 755 8627 1673
E info@thetford.cn
www.thetford.cn